

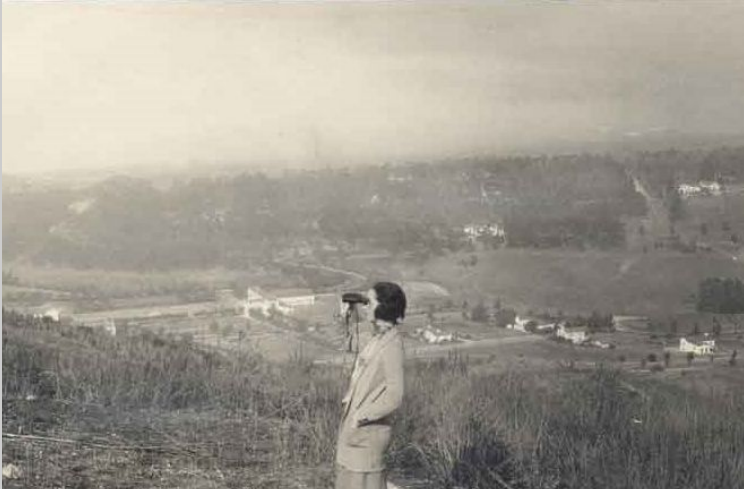
# Hot DAMS!

## Starting a Digital Asset Management System from Scratch (almost)

Monique Leahey Sugimoto  
Archivist & Local History Librarian  
Palos Verdes Library District

Society of California Archivists  
Pasadena, April 28, 2017

# InMagic 2200 Images



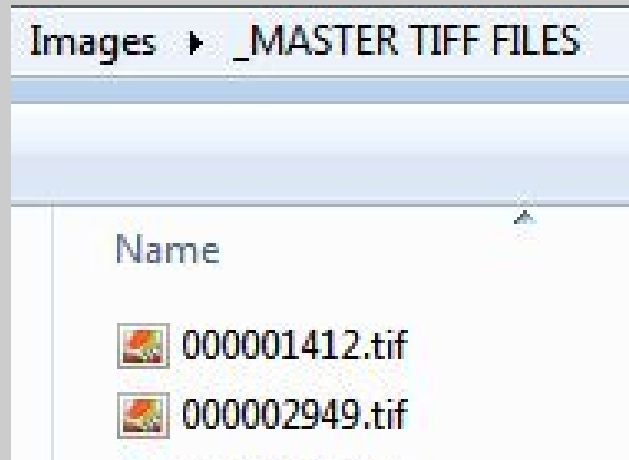
# Metadata

**Bar Code** 000001412

**Photo Call Number** PC COA 56

**Title** "Lunada Bay / Looking toward Resort Point"

**Description** Hand-colored postcard showing view of Lunada Bay looking south across the bay from Rocky Point. Catalina Island visible in background. Split back postcard printed on reverse with "Published for Palos Verdes Drug Store / Palos Verdes Estates, California. Made in U.S.A." and "Quality Post Cards - The Meriden Gravure Co., Meriden, Conn."



# Public Access: Flickr & OAC





June 23, 2008 Email from IT

“July 21 is the  
deadline for *migrating*  
*away* from InMagic.

After that, we’ll  
pull that server from  
service.”

# Migrating away from and into...



InMagic Catalog Dump.pdf 



inmagic-import-without-line-breaks.txt



InMagic cataloging.htm



Inmagic Export.docx 

# Digital Asset Management System



- Low cost
- Flexible
- Achievable with limited staffing

# Content Types



- JPG, GIF/PNG
- TIFF, JP2000
- PDF
- Newspapers
- Books
- Audio (MP3/WAV files)
- Compound objects

# islandora



- Digital Object Repository (Fedora Commons)
- Content Management (Drupal)



# Lyrasis



## LYRasis Islandora Hosting Services

- Setup: hosting end, security certificates, public interface, branding, etc.
- Data Migration
- Support: training, documentation, etc.
- Software Updates
- “ZenDesk” continued support

# palosverdeshistory.org/user

[Home](#) › [Palos Verdes Homes Association Photograph Collection](#) ›

## "Mme .Amelita Galli-Curci Enjoying the View from Her Estate Overlooking Malaga Cove Plaza," Palos Verdes Estates.

View

IP Embargo

Manage

Summary

Full Description

<b>Title:</b>	"Mme .Amelita Galli-Curci Enjoying the View from Her Estate Overlooking Malaga Cove Plaza," Palos Verdes Estates.
<b>Date Created:</b>	1930-01-00
<b>Extent:</b>	1 photographic print (b/w); 4.25 x 6.5 in.
<b>Abstract/Description:</b>	Image shows Amelita Galli-Curci (1882-1963), world-famous opera singer, standing on a hillside and looking westward with binoculars. Visible in background below is Malaga Cove and grove of eucalyptus trees. Mme. Galli-Curci and her second husband, Homer Samuels, whom she married in 1921, purchased a frontage of 288 feet on Via Rincon in Montemalaga, overlooking the golf course and Malaga Cove Plaza.
<b>Identifier(s):</b>	000034629 (Bar Code)
<b>Note(s):</b>	Photo Source: Palos Verdes Homes Association Citation: Palos Verdes Bulletin, January 1930, p. 3.

# palosverdeshistory.org

BROWSE COLLECTIONS

ADVANCED SEARCH

ABOUT

GO



[Marineland](#)



[Newspaper Collection](#)

## PALOS VERDES BULLETIN

Published by Palos Verdes Home Association, Redrock Beach, California



[Palos Verdes Bulletin](#)



[Palos Verdes Homes  
Association Photograph  
Collection](#)



[Phillips Ranch Photo  
Collection](#)



[Postcard Collection](#)

# Migration: File transfer



**Local Computer**



**Hosting Server**

Image courtesy [www.webnots.com](http://www.webnots.com)

# Migration: Metadata Dump File?



InMagic Catalog Dump.pdf 



inmagic-import-without-line-breaks.txt



InMagic cataloging.htm

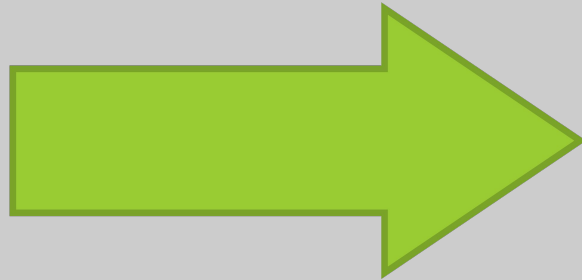


Inmagic Export.docx 



# Migration: Metadata Mapping

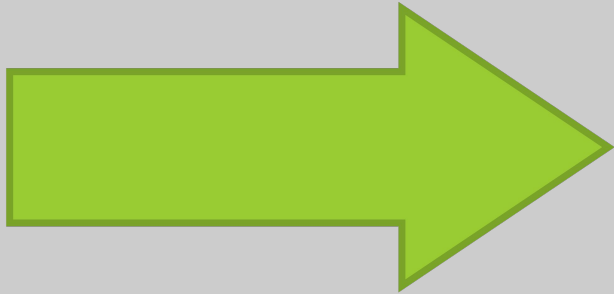
**Architect** Risley, Winchton Leamon  
**Builder** Escherich Brothers  
**Date Built** 1929  
**Home Owner** Field, Oliver Chapin



Note(s)  
Note(s)  
Note(s)  
Note(s)







# Migration: Metadata Enhancement

**NO METADData**



<accessCondition>  
<location><physicalLocation>

# Cost Control: TIFF v JP2

Name	Date modified	Type	Size
 000041400.jp2	2/18/2017 11:38 AM	JP2 File	2,269 KB
 000041418.jp2	2/18/2017 11:38 AM	JP2 File	2,520 KB
 000041384.jp2	2/18/2017 11:38 AM	JP2 File	2,155 KB
 000041400.tif	2/18/2017 11:37 AM	TIFF image	144,525 KB
 000041418.tif	2/18/2017 11:37 AM	TIFF image	159,780 KB
 000041384.tif	2/18/2017 11:36 AM	TIFF image	136,412 KB

# Post Migration Cleanup: Uncataloged



[000015131]



[000015149]



[000017277]

# Post Migration Cleanup: Refine Metadata



### Subject

Coasts--California, Southern.

Topic of source resource.

### Place

Rancho Palos Verdes (Calif.) +

Palos Verdes Peninsula (Calif.) - Santa Catalina Island (Calif.) -

Spacial characteristics of source resource.

### Temporal coverage

1951-1960 +

Temporal characteristics of the source resource.



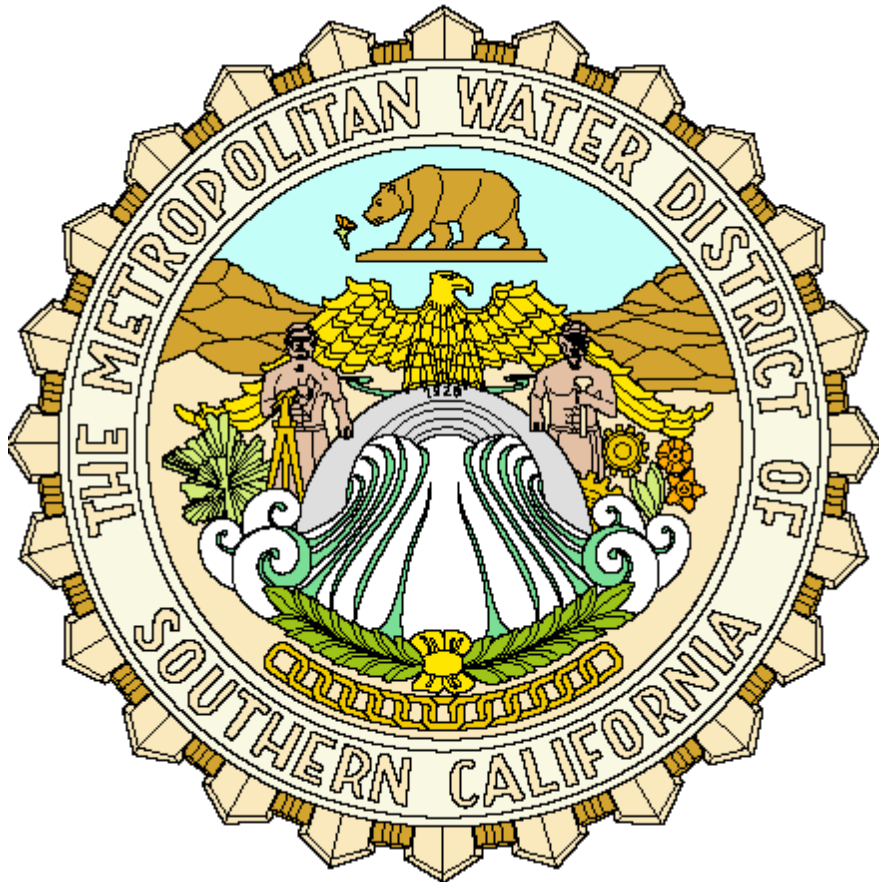
# Next Steps?

- Complete all of the clean up
- Address more long preservation of our tiff files
- Refine in-house ingest process
- Create training materials

**Migrate On!**

**Thank you.**

# Research + Exhibit = Improved Reference Skills



**SCA - AGM**

**04/29/2017**

**David Keller**

# Metropolitan Water District of Southern California (MWD) Facts

- Founded in 1928 by a group of 13 cities
- 26 member agencies
- Supplies drinking water to 19 million people
- 37 member Board of Directors
- Responsible for construction, maintenance, and operation of the Colorado River Aqueduct (CRA)
- Covers 5,200 square mile area from Ventura County to San Diego County
- Supports So Cal's one trillion dollar economy

# Turning On The Tap: 75 Years of Water Delivery to Southern California





# MWD Images - Maps



- LEGEND**
- FEDERAL AQUEDUCT
  - STATE AQUEDUCT
  - LOCAL AQUEDUCT

**MAJOR WATER CONVEYANCE FACILITIES IN CALIFORNIA**

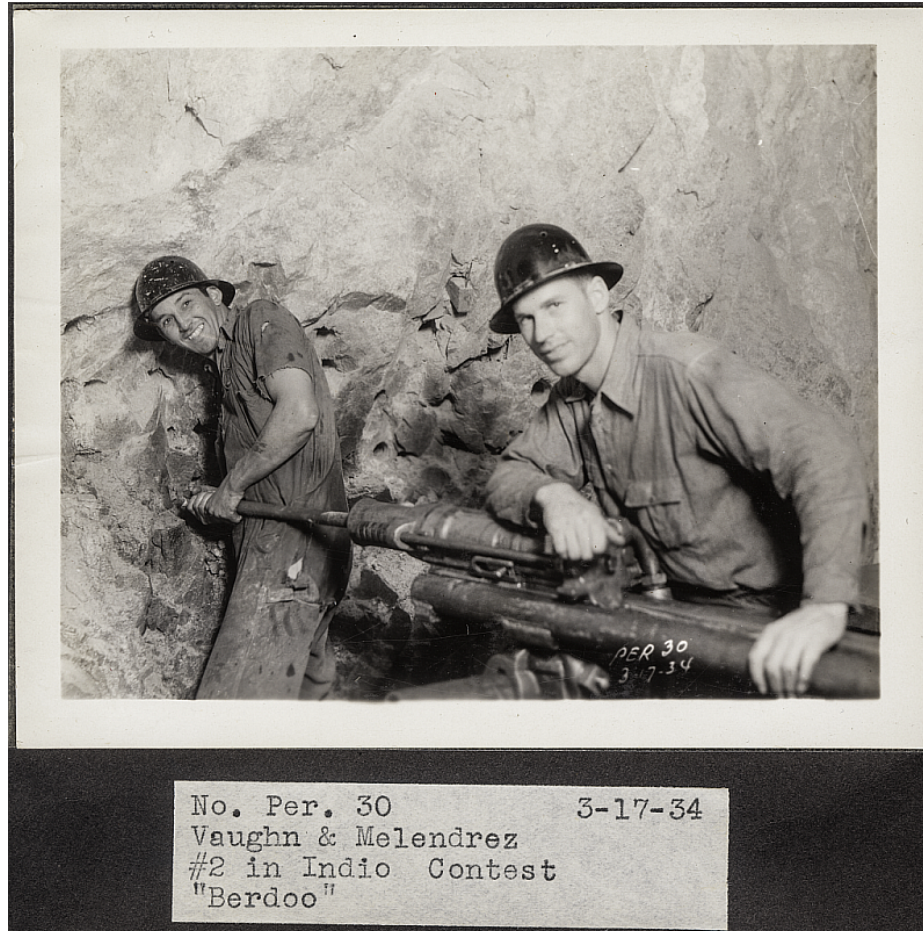


**MWD**  
 METROPOLITAN WATER DISTRICT OF SOUTHERN CALIFORNIA  
[www.mwdh2o.com](http://www.mwdh2o.com)

# Building the Bridge - Photographs



# 1934 Hard Rock Miners



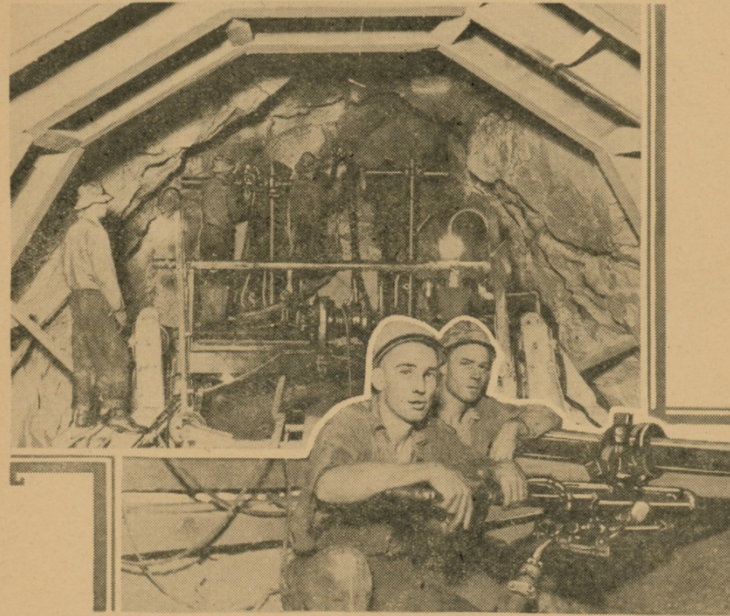
No. Per. 30 3-17-34  
Vaughn & Melendrez  
#2 in Indio Contest  
"Berdo"



# Newspaper Research & Twitter Campaign

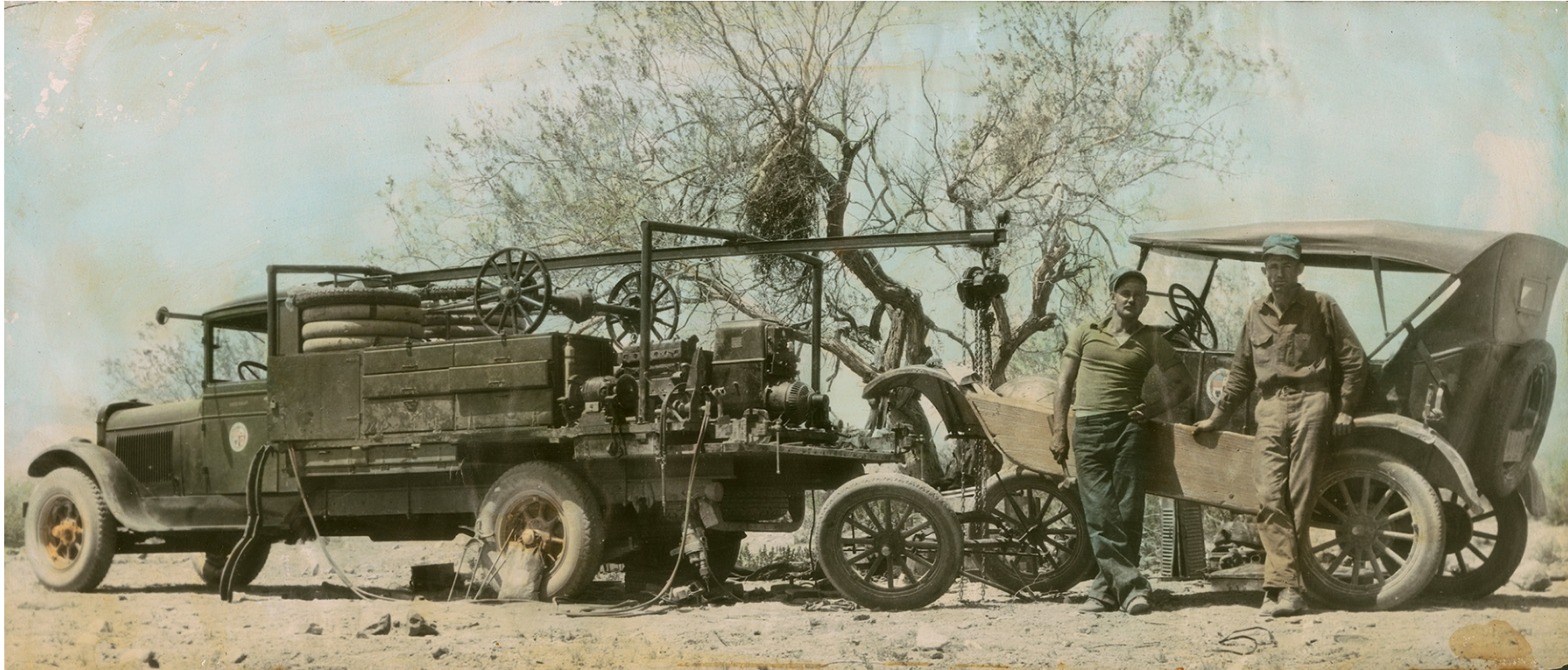
FOR RELEASE JANUARY 6th

## Sound Financing Program Made for Aqueduct Work



Drilling through solid rock in one of the Colorado River Aqueduct tunnels. This scene is typical of the activity now in progress on the greatest construction project in the history of continental United States. Ninety-one miles of sixteen-foot tunnel will be driven in the course of completing the aqueduct. Below are two typical hard-rock drillers.

# Al Preston & Fellow LADWP Worker





# Nurse Runyen - 1934



# Don Kinsey - 1939



# Walter Preston – Concrete Inspector & Photographer





# Artifacts Displayed – The Collection

