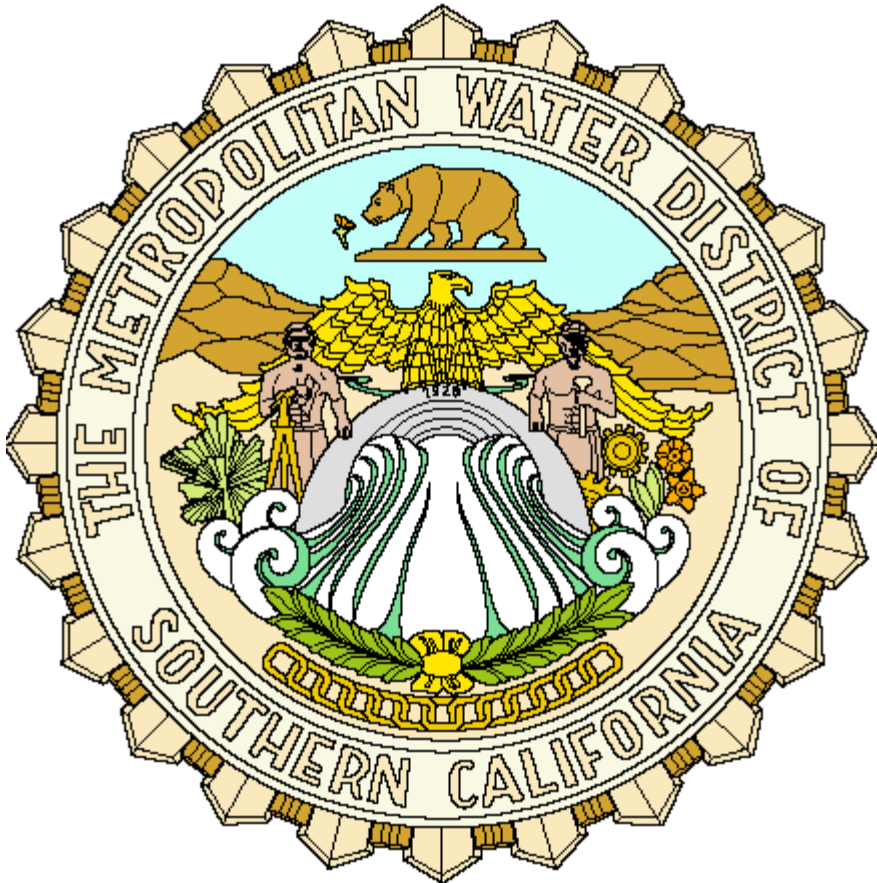


“Deep Water: Photos, Film & Tape from the MWD Archives”



**Society of
California
Archivists AGM**

4/27/2012

David Keller

Metropolitan Water District of Southern California (MWD) Facts

Founded in 1928 by a group of 13 cities

26 member agencies

**Supplies one third to one half of drinking water
for 19 million people**

37 member Board of Directors

**Responsible for construction, maintenance, and
operation of the Colorado River Aqueduct (CRA)**

Covers 5,200 square mile area within 6 counties

Supports So Cal's one trillion dollar economy

Getting Started - William Mulholland & W.B. Mathews



THEY
STARTED
IT

Left, "The Old Chief," the late William Mulholland, packs his bedroll and heads for the river at the start of aqueduct surveys in 1923. Above, the late W. B. Mathews, first General Counsel of the District.

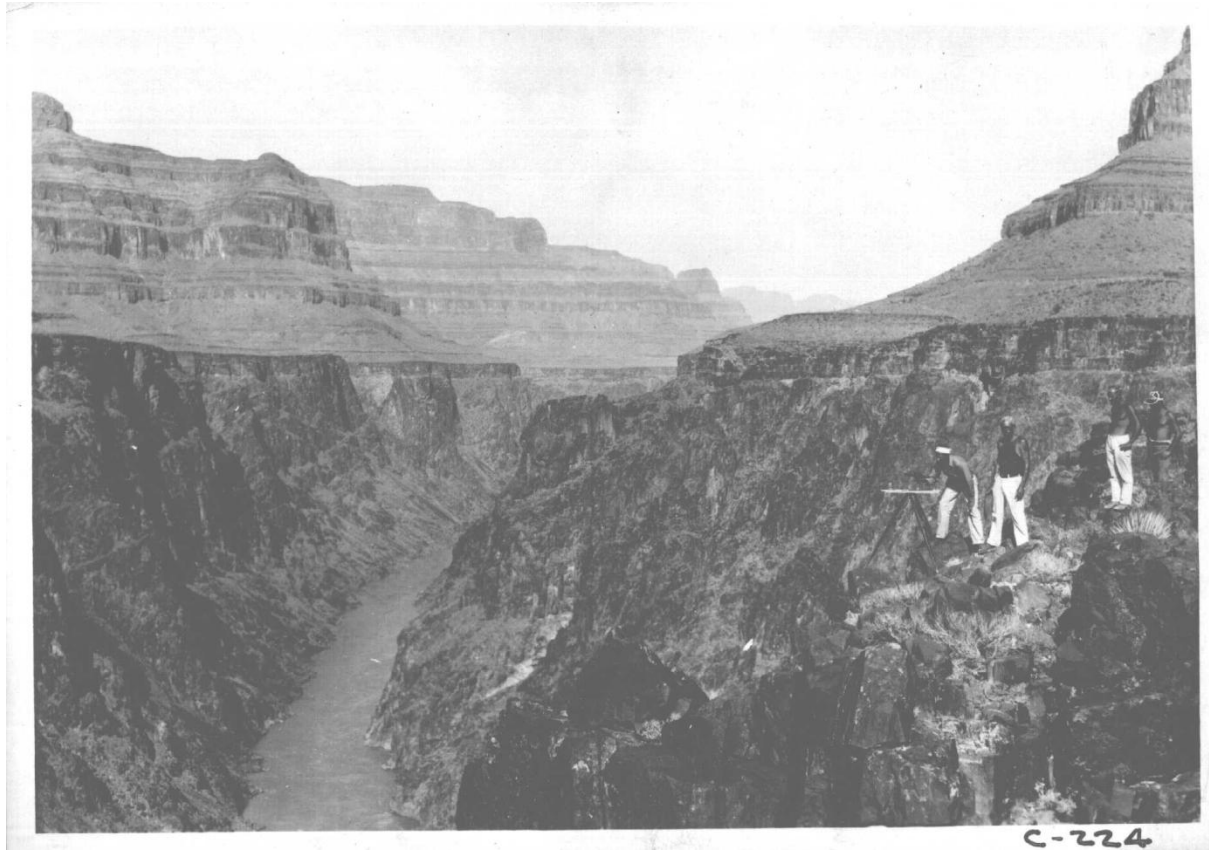
Pre-History – L A City Surveys



Plank Road 1926 Survey Work



Topo Survey Bridge Canyon Dam Site



H.B. Allen & Norma Lou Allen at Rim Canyon, near Black Canyon



M-27

Al Preston Mechanic with portable shop, 12/31/1930.



Construction Begins

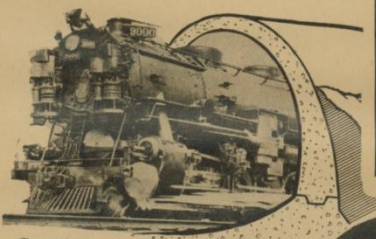
Early 1930's

1934


FOR IMMEDIATE RELEASE

Size of Metropolitan Aqueduct Revealed by District Engineers

LARGEST RAILWAY ENGINE in U. S. Can Pass Through METROPOLITAN AQUEDUCT SECTION



1905 - 200,000 POPULATION IN LOS ANGELES LAUNCHED OWENS RIVER AQUEDUCT




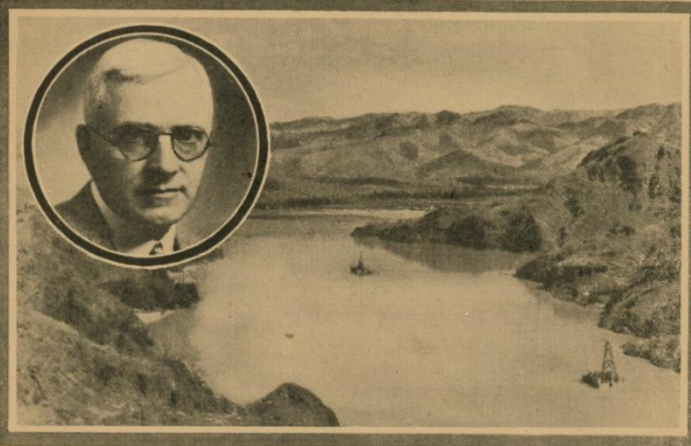
TODAY - 2,000,000 POPULATION IN METROPOLITAN AREA TO LAUNCH COLORADO RIVER AQUEDUCT

DRIVING TEAM OF HORSES THROUGH SECTION OF LOS ANGELES-OWENS RIVER AQUEDUCT DURING CONSTRUCTION—1909

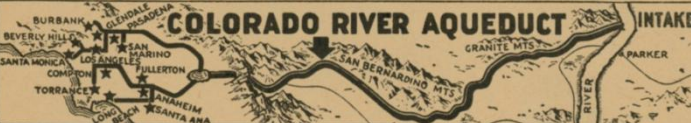
Metropolitan Water District engineers recently made a number of interesting comparisons between the gigantic Metropolitan Aqueduct to be built from the Colorado River and the Owens River Aqueduct built 29 years ago by the residents of Los Angeles. Los Angeles had a population of about 200,000 when the residents of that city launched the Owens River Aqueduct—while approximately 2,000,000 persons now live in the Metropolitan area that will launch the Colorado River Aqueduct. While Los Angeles—in 1909—hosted the fact that their Owens River Aqueduct was so large a team of horses could be driven through one of its siphon sections, the Colorado River Aqueduct with its conduit sections 17 feet in diameter will be large enough to enclose the gigantic "9000" type Union Pacific engine—one of the largest locomotives ever built in the United States. The Owens River Aqueduct was built to supply 2,000,000 persons with water—while the Colorado Aqueduct will care for more than 7,500,000 additional inhabitants in this region.

FOR RELEASE JANUARY 2nd

4000 Already at Work On Colorado River Aqueduct



COLORADO RIVER AQUEDUCT INTAKE



Above is a scene at the intake site of the Colorado River Aqueduct, where one billion gallons of water will be taken from the river daily for the thirteen Southern California cities of the Metropolitan Water District. Inset—F. E. Weymouth, general manager and chief engineer of the District, who is in charge of construction work on the giant Aqueduct project.

CRA Press Release

From Kinsey
Metropolitan Water District

4-13
Released to 5 L. A. Papers, 4 News
Bureaus, District Dailies, L. A.
Community Papers, District Weeklies
and others.

FOR IMMEDIATE RELEASE

Colorado River Aqueduct construction forces are at work today on the first of sixty-two miles of huge canal which will form a part of the 242-mile aqueduct of the Metropolitan Water District.

The huge aqueduct canals, capable of carrying a billion gallons of water daily, have a width across the top of fifty-five feet, a bottom width of twenty feet, and a depth of ten feet, two inches. All are of reinforced concrete construction.

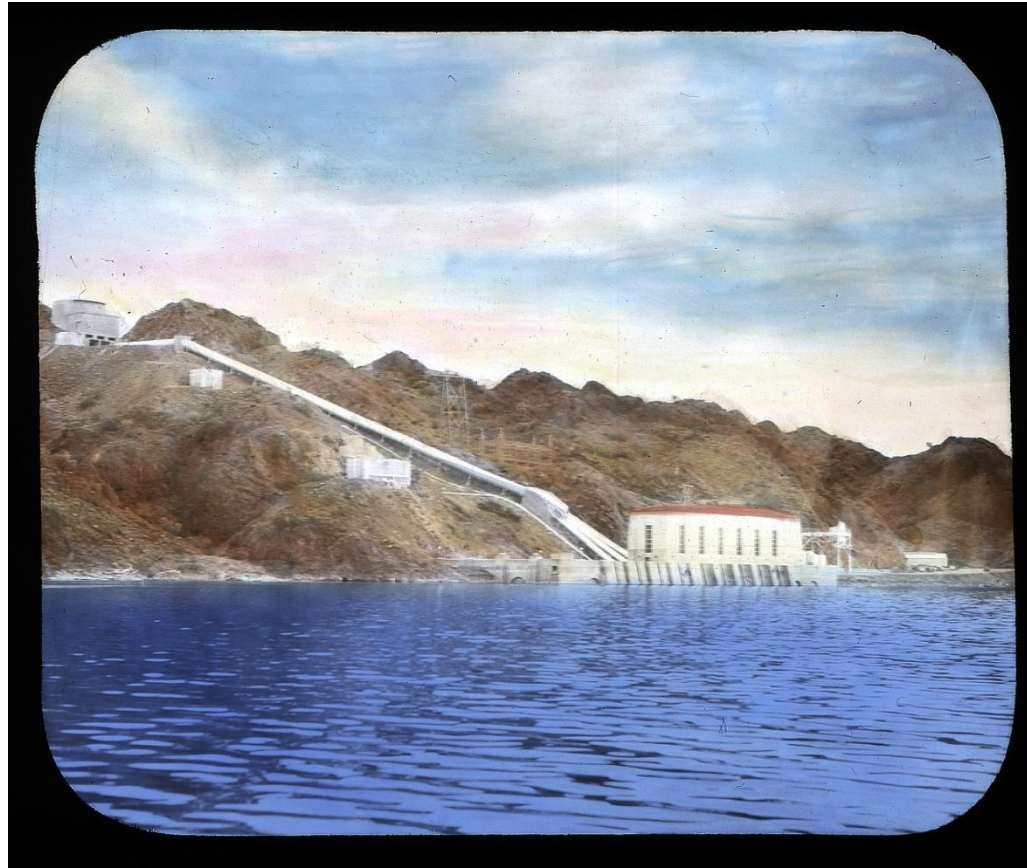
Meanwhile work is going forward on fifty-five miles of conduit sections, twenty-nine miles of siphons, and ninety-two miles of tunnels on the main line of the aqueduct. Ten miles of tunneling also is under way on the distribution system of the project.

Metropolitan Water District progress figures reveal that underground crews have excavated more than sixty-five miles of the tunnel on the main aqueduct. The work of placing concrete lining in excavated tunnel sections is under way at several points.

Forces of Six Companies, Inc., report steady progress on Parker Dam at the aqueduct intake on the Colorado River, 150 miles downstream from Boulder Dam.

4-13-35

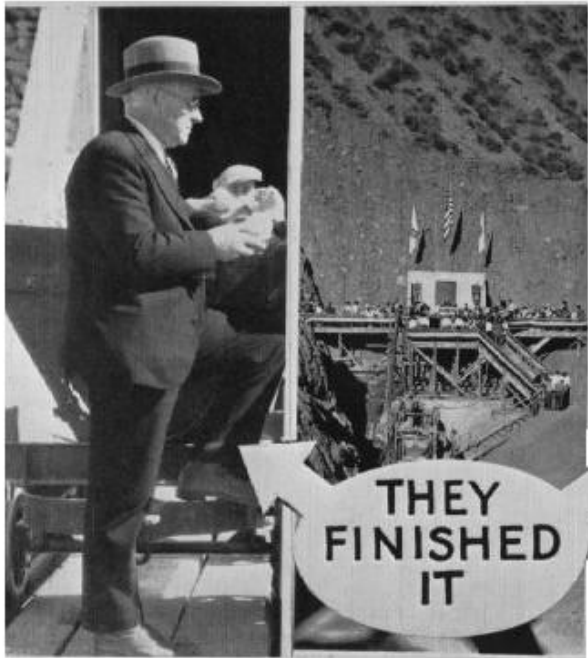
Construction Continues



Whitsett Intake at the Colorado River,
1938-1939

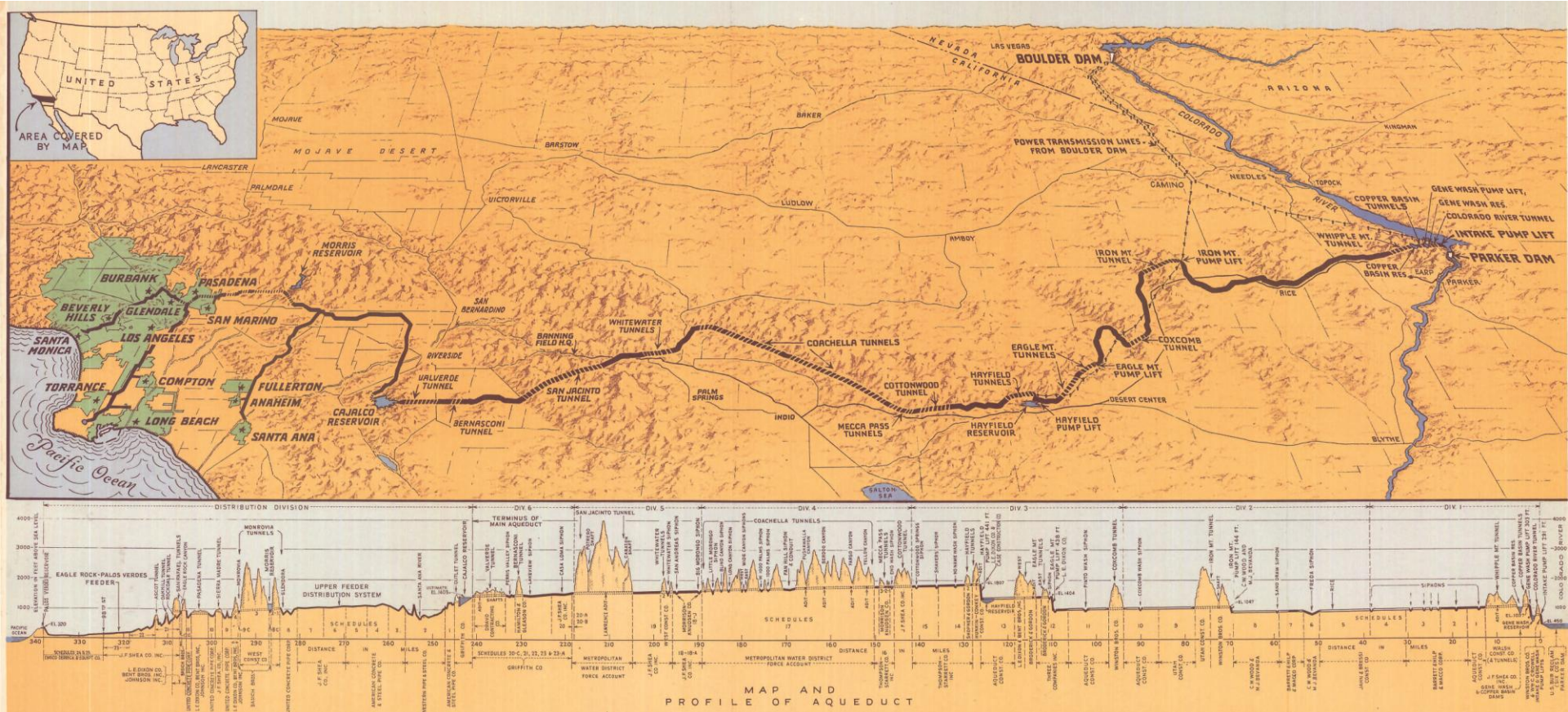
Construction Completed

1939

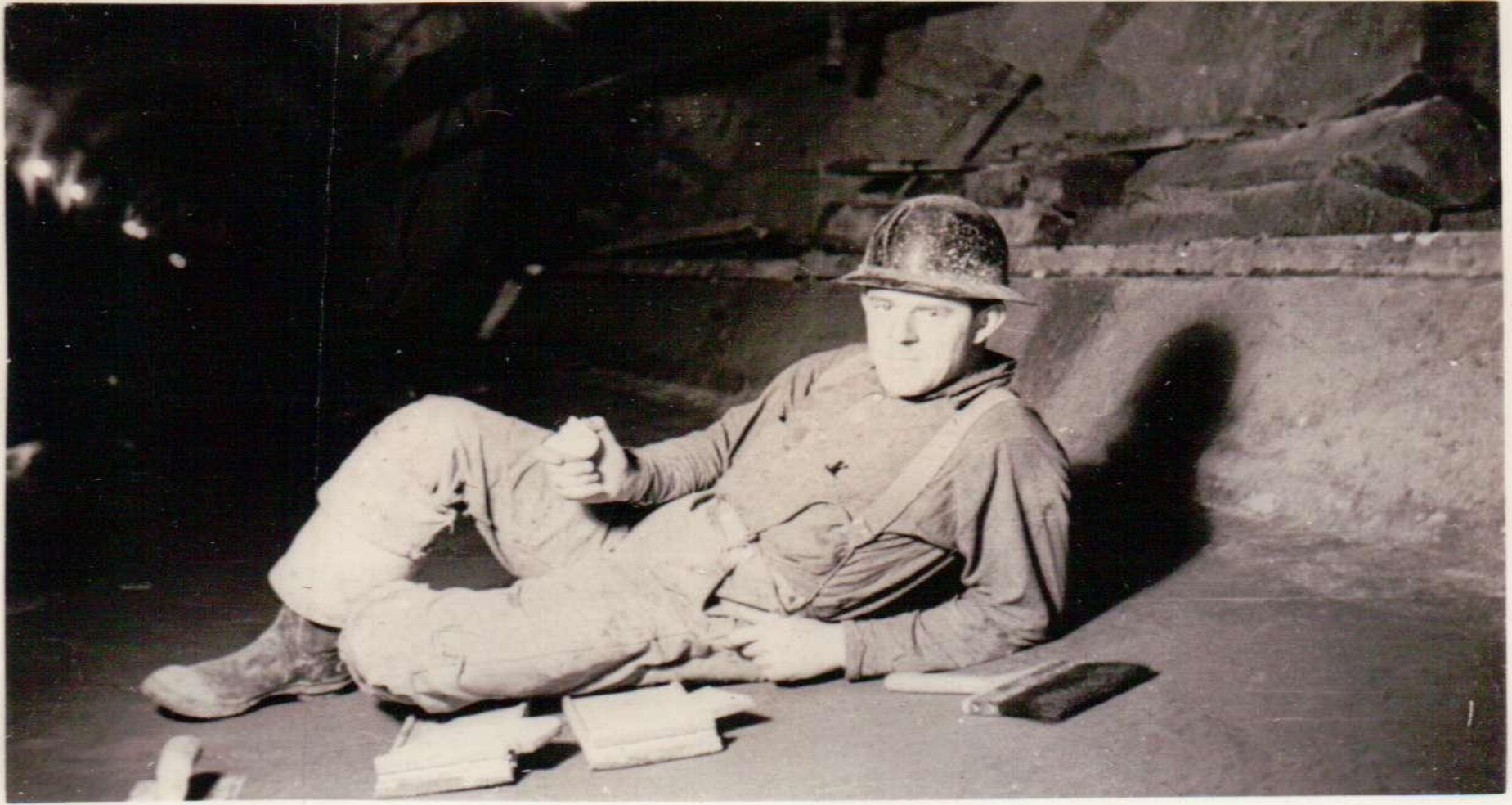


● Left, General Manager Weymouth. Center, the completion ceremony. Right, Chairman Whitsett and Director Rossetti place the last concrete in the main aqueduct. ●

Colorado River Aqueduct Map & Profile



Eugene Davis Oral History



San Jacinto Tunnel

